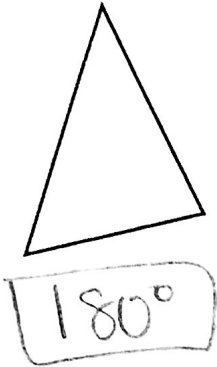


# Lesson 4 Skills Practice

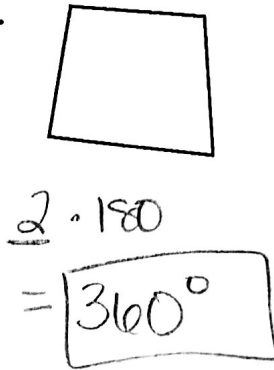
## Polygons and Angles

Find the sum of the interior angle measures of each polygon.

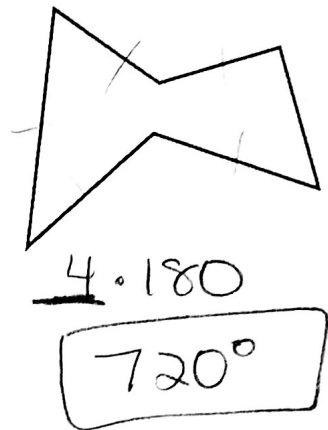
1.



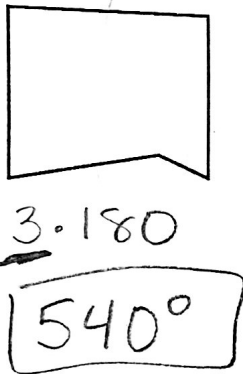
2.



3.



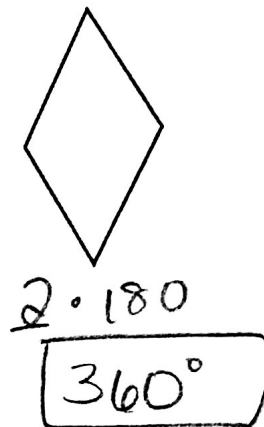
4.



5.



6.



Find the sum of the interior angle measures of each polygon.

7. 13-gon

$$11 \cdot 180 = 1980^\circ$$

8. 18-gon

$$16 \cdot 180 = 2880^\circ$$

9. 32-gon

$$30 \cdot 180 = 5400^\circ$$

10. 35-gon

$$33 \cdot 180 = 5940^\circ$$

Find the measure of one interior angle in each regular polygon. Round to the nearest tenth if necessary.

11. heptagon (7-sided)

$$5 \cdot 180 = 900$$

$$900 / 7 \approx 128.6^\circ$$

12. 26-gon

$$24 \cdot 180 = 4320$$

$$4320 / 26 \approx 166.2^\circ$$

13. decagon (10-sided)

$$8 \cdot 180 = 1440$$

$$1440 / 10 = 144^\circ$$

14. 23-gon

$$21 \cdot 180 = 3780$$

$$3780 / 23 \approx 164.3^\circ$$